

Low Profile IOT Antenna

L[G]-7-38[-24-58]

Low Profile IOT Antenna



Low Profile Design

3G/4G/5G, WiFi & GPS/GNSS Functionality

Ideal for M2M and IOT installations

Meets IK10 and IP69K

The Panorama L[G]-7-38[-24-58] range is designed to decrease the lifetime cost of M2M and IOT applications by offering a robust low profile antenna for challenging environments.

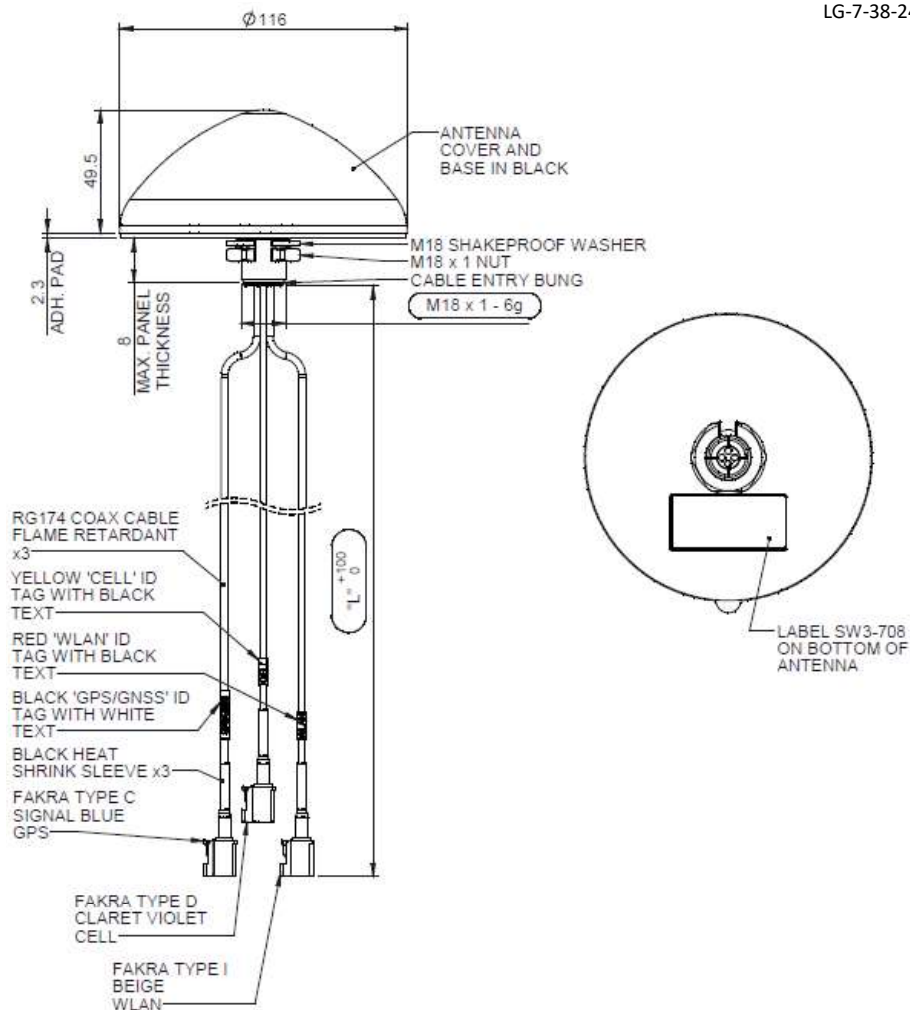
The antenna covers 698-960/1710-3800MHz supporting 3G, 4G and 3.5GHz 5G, optional 2.4/5.0GHz WiFi and optional GPS/GNSS with a 26dB LNA. The efficient element design ensures a high first time connection rate and an ongoing, robust communications link even in many low coverage areas.

The antenna can be installed on conductive or non-conductive panels via the 19mm (3/4") mounting bush and is fitted with Flame Retardant RG174 cables compliant with UN ECE R118 and either FAKRA or SMA connectors.

The antenna range is certified to both IK10 and IP69K when properly installed meeting the most stringent vandalism and ingress protection standards.

Technical Drawing

LG-7-38-24-58-3FK Shown



Low Profile IOT Antenna

PANORAMA ANTENNAS

L[G]-7-38[-24-58]

Product Data

Part No.	LG-7-38-24-58-3SP	LG-7-38-24-58-3FK	LG-7-38-24-58-1FK	LG-7-38-24-58-1SP
Electrical Data				
Frequency Range (MHz)	Element 1	698-960/1710-3800		
	Element 2	2400-2485/4900-6000		
	Element 3	1562-1612		
Peak Gain†	Element 1: 698-960MHz	1dBi		
	Element 1: 1710-3800MHz	6dBi		
	Element 2: 2.4GHz	7dBi		
	Element 2: 5.0GHz	7dBi		
Typical VSWR	<2.5:1			
Polarisation	Vertical			
Pattern	Omni-directional			
Impedance	50Ω			
Max input power (W)	20			
GPS/GNSS Data				
Frequency Range (MHz)	1562-1612Mhz			
LNA Gain (dB)	26dB			
Typical Current (mA)	15			
Typical Voltage	3-5 VDC			
Mechanical Data				
Dimensions (mm)	Height	49.5 (1.94")		
	Diameter	116 (4.56")		
Operating Temp (°C)	-40° / +85°C (-40° / 185°F)			
Material	Lexan EXL 9330 (UL94-V0)			
Colour	Black			
IK rating **	IK10			
Ingress protection**	IP69K			
Mounting Data				
Fixing	Panel mount 19mm (3/4")			
Cable Data				
Cable 1: Cellular	Cable Type	RG174 (meets UN ECE 118)		
	Diameter (mm)	2.8 (0.11")		
	Length (m)	3 (10')	1 (3' 3")	
	Termination	SMA(m)	FAKRA D (Burgundy) Jack	FAKRA D (Burgundy) Jack
Cable 2: WiFi	Cable Type	RG174 (meets UN ECE 118)		
	Diameter (mm)	2.8 (0.11")		
	Length (m)	3 (10')	1 (3' 3")	
	Termination	SMA Rev Pol	FAKRA I (Beige) Jack	FAKRA I (Beige) Jack
Cable 3: GPS/GNSS	Cable Type	RG174 (meets UN ECE 118)		
	Diameter (mm)	2.8 (0.11")		
	Length (m)	3 (10')	1 (3' 3")	
	Termination	SMA(m)	FAKRA C (Blue) Jack	FAKRA C (Blue) Jack

†Peak gain shown simulated in CST microwave studio on a 1mx1m (3'x3') ground plane excluding cable loss.

**When properly installed

Panorama Antennas Ltd

Frogmore, London, SW18 1HF, United Kingdom
 T: +44 (0)20 8877 4444 | F: +44 (0)20 8877 4477
 E: sales@panorama-antennas.com
 W: www.panorama-antennas.com

PANORAMA ANTENNAS

Waiver: The data given above is indicative of the performance of the product/s under particular conditions and does not imply a guarantee of performance. These specifications are subject to change without notice. Copyright © Panorama Antennas Ltd. All rights reserved.

Low Profile IOT Antenna

L[G]-7-38[24-58]

Part No.		LG-7-38-3SP	LG-7-38-3FK	LG-7-38-1FK	LG-7-38-1SP
Electrical Data					
Frequency Range (MHz)	Element 1	698-960/1710-3800			
	Element 3	1562-1612			
Peak Gain†	Element 1: 698-960MHz	1dBi			
	Element 1: 1710-3800MHz	6dBi			
Typical VSWR	<2.5:1				
Polarisation	Vertical				
Pattern	Omni-directional				
Impedance	50Ω				
Max input power (W)	20				
GPS/GNSS Data					
Frequency Range (MHz)	1562-1612Mhz				
LNA Gain (dB)	26dB				
Typical Current (mA)	15				
Typical Voltage	3-5 VDC				
Mechanical Data					
Dimensions (mm)	Height	49.5 (1.94")			
	Diameter	116 (4.56")			
Operating Temp (°C)	-40° / +85°C (-40° / 185°F)				
Material	Lexan EXL 9330 (UL94-V0)				
Colour	Black				
IK rating**	IK10				
Ingress Protection**	IP69K				
Mounting Data					
Fixing	Panel mount 19mm (3/4")				
Cable Data					
Cable 1: Cellular	Cable Type	RG174 (meets UN ECE 118)			
	Diameter (mm)	2.8 (0.11")			
	Length (m)	3 (10')		1 (3' 3")	
	Termination	SMA(m)	FAKRA D (Burgundy) Jack	FAKRA D (Burgundy) Jack	SMA(m)
Cable 2: GPS/GNSS	Cable Type	RG174 (meets UN ECE 118)			
	Diameter (mm)	2.8 (0.11")			
	Length (m)	3 (10')		1 (3' 3")	
	Termination	SMA(m)	FAKRA C (Blue) Jack	FAKRA C (Blue) Jack	SMA(m)

†Peak gain shown simulated in CST microwave studio on a 1mx1m (3'x3') ground plane excluding cable loss.

**When properly installed

Low Profile IOT Antenna

L[G]-7-38[24-58]

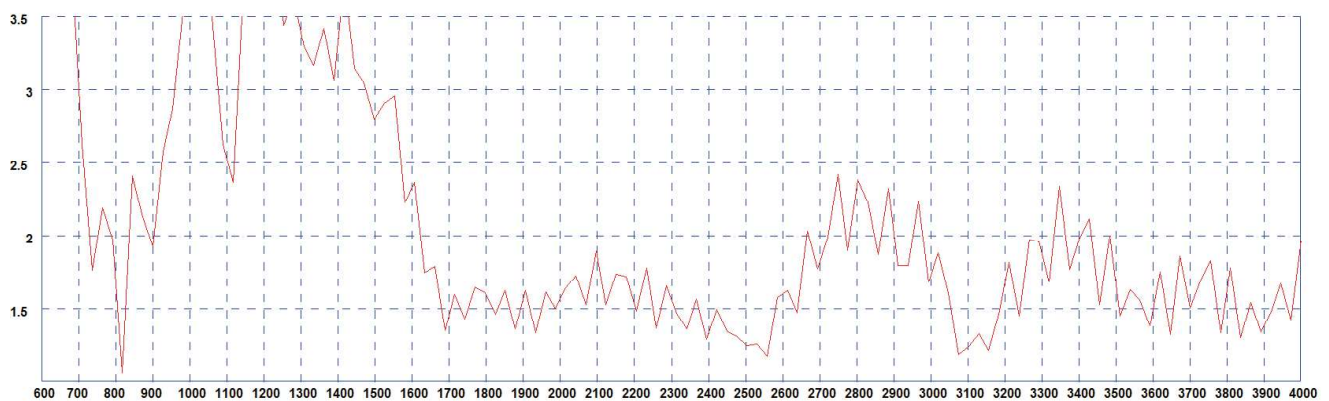
Part No.	LP-7-38-3SP	LP-7-38-3FK	LP-7-38-1FK	LP-7-38-1SP	
Electrical Data					
Frequency Range (MHz)	Element 1 698-960/1710-3800				
Peak Gain†	Element 1: 698-960MHz		1dBi		
	Element 1: 1710-3800MHz		6dBi		
Typical VSWR	<2.5:1				
Polarisation	Vertical				
Pattern	Omni-directional				
Impedance	50Ω				
Max input power (W)	20				
Mechanical Data					
Dimensions (mm)	Height	49.5 (1.94")			
	Diameter	116 (4.56")			
Operating Temp (°C)	-40° / +85°C (-40° / 185°F)				
Material	Lexan EXL 9330 (UL94-V0)				
Colour	Black				
IK rating**	IK10				
Ingress protection**	IP69K				
Mounting Data					
Fixing	Panel mount 19mm (3/4")				
Cable Data					
	Cable Type	RG174 (meets UN ECE 118)			
Cable 1: Cellular	Diameter (mm)	2.8 (0.11")			
	Length (m)	3 (10')	1 (3' 3")		
	Termination	SMA(m)	FAKRA D (Burgundy) Jack	FAKRA D (Burgundy) Jack	SMA(m)

†Peak gain shown simulated in CST microwave studio on a 1mx1m (3'x3') ground plane excluding cable loss.

**When properly installed

Typical VSWR - Element 1*

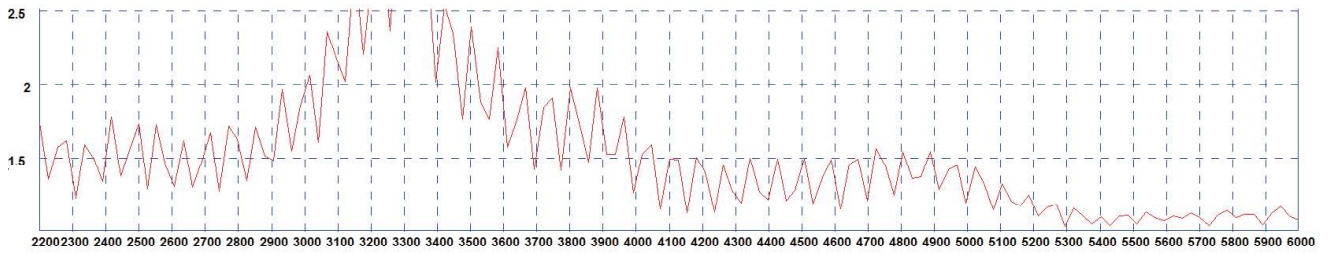
Electrical Data



*VSWR measured in free space with 1.25m (4'1") of RG174 cable

*VSWR measured in free space with 1.25m (4'1") of RG174 cable

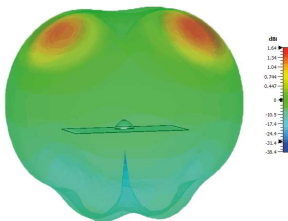
Typical VSWR - Element 2*



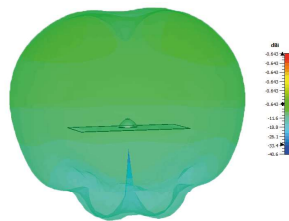
*VSWR measured in free space with 1.25m (4'1") of RG174 cable

3D Patterns - Element 1

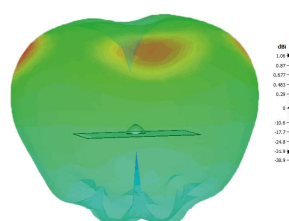
Typical 3D Pattern Side -700MHz



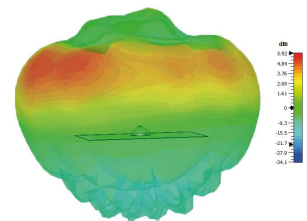
Typical 3D Pattern Side -800MHz



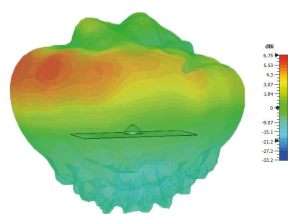
Typical 3D Pattern Side -900MHz



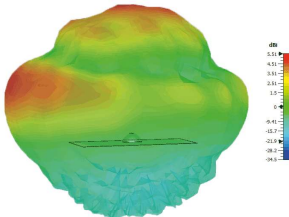
Typical 3D Pattern Side -1800MHz



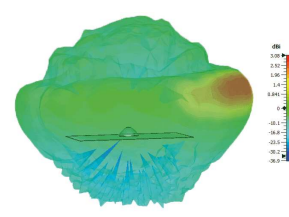
Typical 3D Pattern Side -2100MHz



Typical 3D Pattern Side -2600MHz

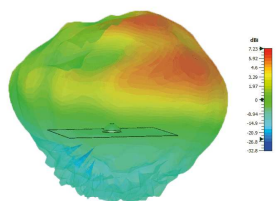


Typical 3D Pattern Side -3600MHz

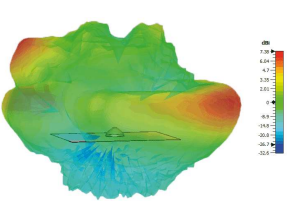


3D Patterns Element 2

Typical 3D Pattern Side -2400MHz



Typical 3D Pattern Side -5400MHz



Typical Pattern Element 3

Typical E-Plane 1575MHz

