

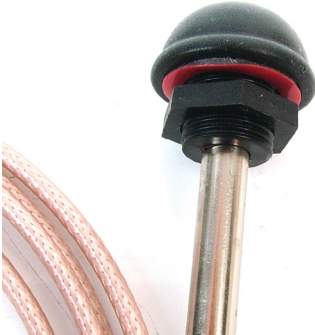


Tango 29

Wireless LAN and Bluetooth Covert Panel Mount Antenna

Key Features

- Omnidirectional radiation
- Ground plane Independent
- Wide operating temperature range



General Description

The Tango 29 is a compact exterior mounted panel antenna with an omnidirectional radiation pattern.

Covert in nature due to its size and shape; it could be mistaken for a bolt/nut cover and would be hard to grip; providing a good anti-vandal solution.

This antenna is supplied as standard with the SMA male reverse polarity connector. Alternative connectors and cable lengths can be specified for volume orders.

Additional Considerations

- Does not rely on mounting on metallic surface
- WiFi, Bluetooth and ZigBee compatible





Tango 29

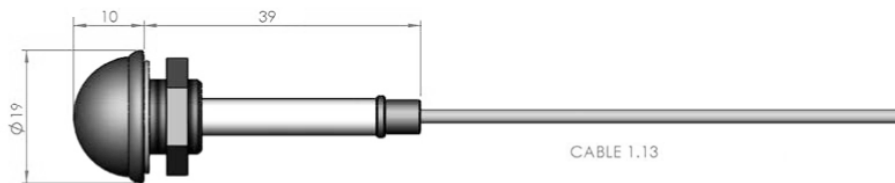
Wireless LAN and Bluetooth Covert Panel Mount Antenna

Electrical Specification

Impedance:	50 ohm
Peak Gain:	3.17dBi
VSWR:	≤ 1.9:1
Frequency:	2.4-2.5GHz
Radiation:	Omni-directional

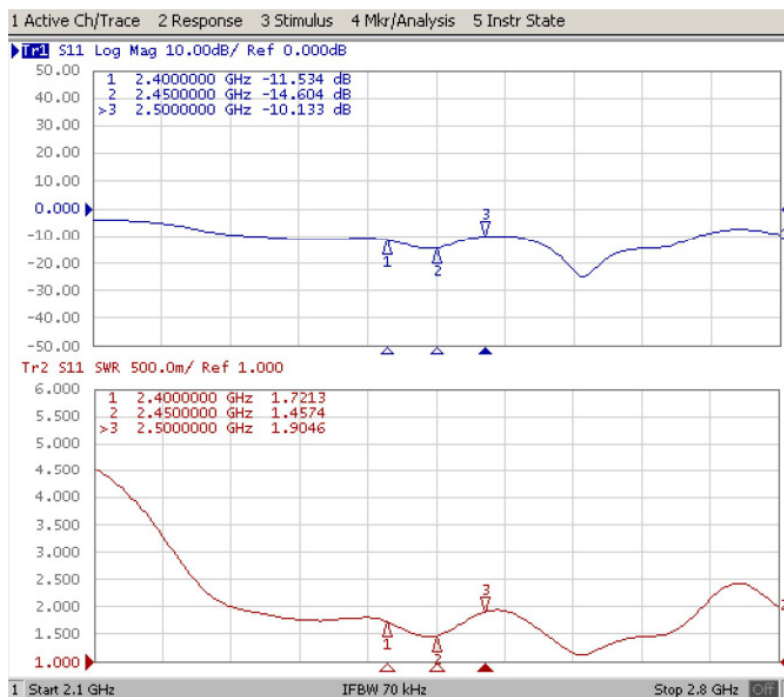
Mechanical Specification

Operating temp:	-20 to +60°C
Storage temp:	-30 to +75°C
Dimensions:	10mm Length, 19mm Ø
Connector:	SMA Male RP
Cable:	1.13mm Ø
Mounting method:	6.5mm stud length with max panel thickness 3.5mm



Test Data

Return Loss / VSWR

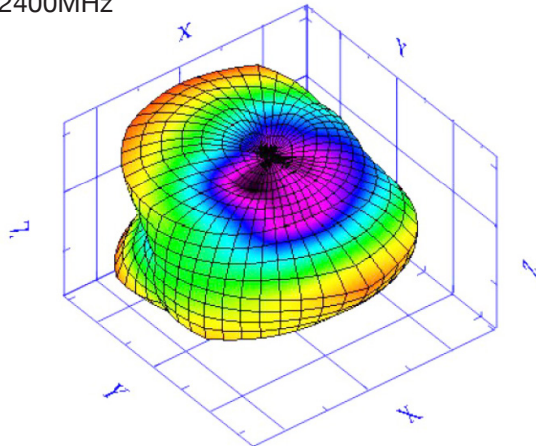


Tango 29

Wireless LAN and Bluetooth Covert Panel Mount Antenna

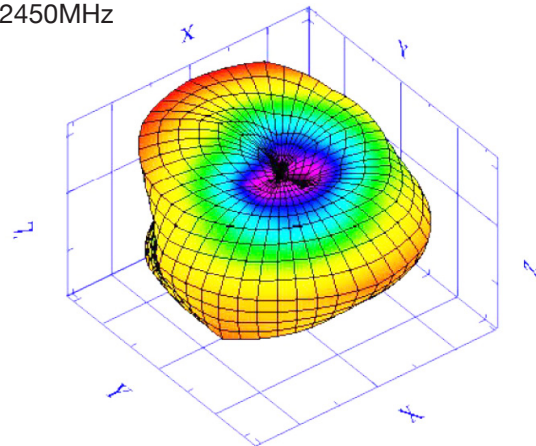
Radiation Patterns

2400MHz



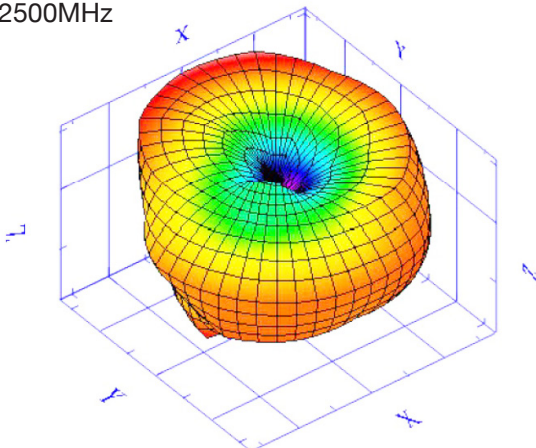
E-Total Peak Gain (dBi)	2.9
Efficiency (%)	55.1
Average Gain (dB)	-2.59

2450MHz



E-Total Peak Gain (dBi)	2.98
Efficiency (%)	56.31
Average Gain (dB)	-2.49

2500MHz



E-Total Peak Gain (dBi)	3.17
Efficiency (%)	62.47
Average Gain (dB)	-2.04

Ordering Details

Part Number	Description
TANGO29/1M/SMAM/RP/S/35	Wireless LAN and Bluetooth Covert Panel Mount Antenna, SMA Male RP