


Performances

 **Simplicity : 1 button, 1 LED, test results in a few seconds**

Autonomie

 **Rechargeable battery via micro USB port**



This tester enables you to accurately evaluate the LoRaWAN network coverage quality. A multicolored LED displays a color according to the coverage quality at your location. Test frames emitted by the push of the central button are visible on our ATIM ACW Platform, and on your national LoRaWAN operator's backend.

Very useful for discovering and mastering LPWAN technologies and the realization of "Proof of Concept".

Produit disponible auprès de :

Technical characteristics

<i>Dimensions (L x W x D)</i>	90 x 45 x 15 mm
<i>Housing</i>	Plastic case
<i>Power supply</i>	325mAh internal LiPo battery rechargeable via micro USB port (micro USB cable not included)
<i>Weight</i>	30g
<i>Frequency</i>	868 MHz
<i>RF Power</i>	14dBm

Reference

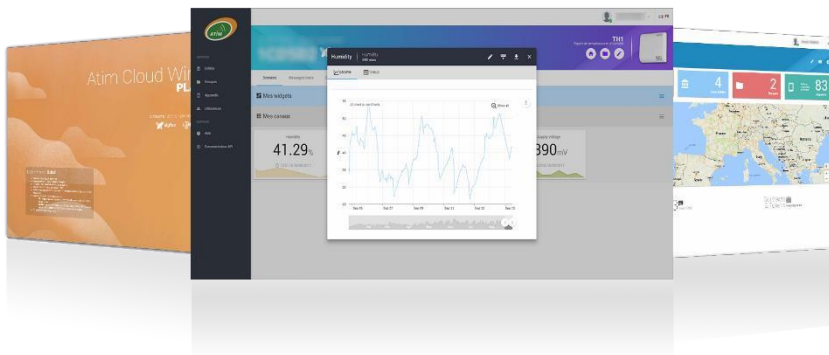
- **ACW/LW8-TST**
LoRaWAN version
- **ACW/SF8-TST**
Sigfox version

**Also available with
subscription to the ACW
Platform (optional).**

RSSI table

<i>Excellent</i>	Green	> -119dBm
<i>Good</i>	Yellow	from -120dBm to -135dBm
<i>Poor</i>	Purple	≤ -136dBm
<i>No Rx</i>	Red	no network
	White	waiting network feedback (downlink)

Atim Cloud Wireless® Platform



**Control all your atim devices using LoRa
and Sigfox on the same secured Web
platform!**

**Manage and operate your IoT data very
easily.**

**Thanks to new LPWAN networks, device
remote management is simple and
accessible to anyone.**

- 📁 **Managing the products by groups**
- 👁️ **Find all your data in real time on a graphic/control panel**
- 📶 **Signal quality**
- ⚙️ **Personalization of the graphics and information channels**
- 📧 **SMS alerts**
- 📁 **Export your data (by product or by group)**
- ✉️ **Email Alerts**
- 📍 **Geo-tracking of your products**
- 🔒 **Secured API**

Produit disponible auprès de :



www.ebds.eu

Tél : 09 72 36 76 46

info@ebds.eu